



KURODA



F Series Ultra QUIET Ball Screw

- Low Noise
- Higher rotational Speeds
- Precise Positioning

Contact Us! 800-433-3434 USA
Email info@grp6.com

KURODA NEW BALL SCREWS

Ultra-Quiet Ball screw F series

Shaft Diameter $\phi 10$ $\phi 12$ $\phi 15$ $\phi 20$ $\phi 25$ $\phi 32$ $\phi 36$ $\phi 40$

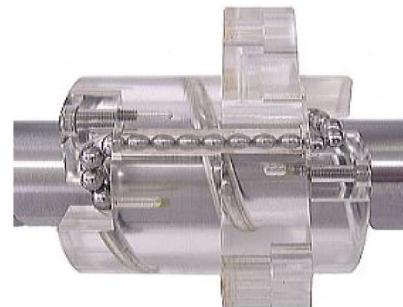
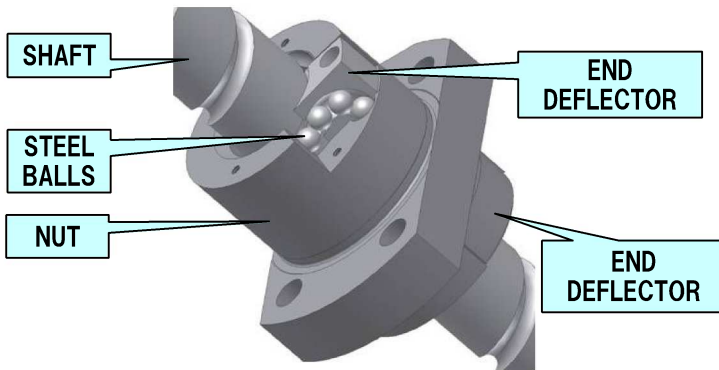
Characteristics

- Low noise and good sound quality
- High rotational speed
- Compact and space-saving nut
- Operate in long life



End deflector circulation system

Nut Structure



F series line up

High rotational speed & low noise F series	In-stock item	Without shaft end machining: FE series Accuracy grade C7, Axial clearance 0.03mm or below.
	Customized item	Without shaft end machining: FG series Accuracy grade C5, Axial clearance 0.005mm or below. Single Nut :FR series Accuracy Grade from C3 to C7 (Axial clearance other than standard figure is available too. Please consult Kuroda staff) Double nut series :FR series Accuracy grade C3 to C5 (Preload amount can be set depends on your request, please consult Kuroda Staff) NEW

Shaft Diameter & Lead length

Shaft DIA	Lead length							
	5mm	8mm	10mm	12mm	16mm	20mm	25mm	30mm
10mm			NEW ○ ●					
12mm			NEW ○ ●			NEW ○ ●		
15mm	○ ●		○ ●			○ ●		NEW ●
20mm			○ ●			○ ●		
25mm	○ ●		○ ●				○ ●	
32mm	●	● ◇	NEW ● ◇	● ◇	● ◇			
36mm				● ◇	● ◇			
40mm		● ◇	● ◇	● ◇	● ◇			

○: In-stock item (FE, FG series)

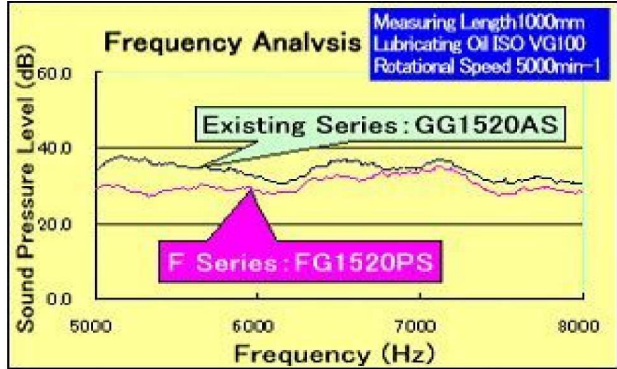
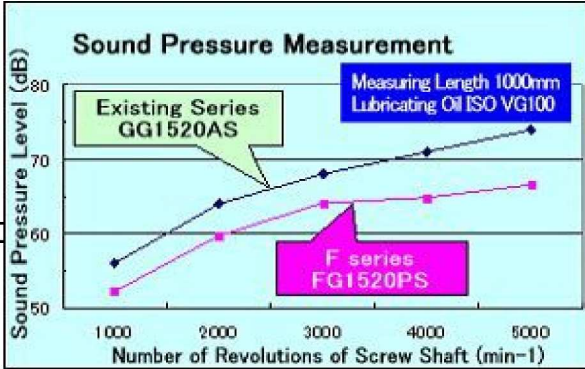
●: Customized Item (Single nut, FR series)

◇: Customized Item (Double nut, FR series)

Decrease sound pressure level and improve sound quality

★ Sound pressure level is reduced by 6dB in maximum compared to our existing tube circulation series.

★ Decrease the harsh high frequency noise level (over 5000Hz).



High rotational speed

★ By the new nut mechanism where steel balls can run smoothly, maximum table speed has become much higher.

Maximum table speed

Shaft Dia		Lead							
		5mm	8mm	10mm	12mm	16mm	20mm	25mm	30mm
10mm	Table speed mm/s			1100					
12mm				900			1800		
15mm		417		833			1667		2500
20mm				833			1667		
25mm		417		833				2083	
32mm		333	533	667	800	1067			
36mm					700	933			
40mm			427	533	640	853			

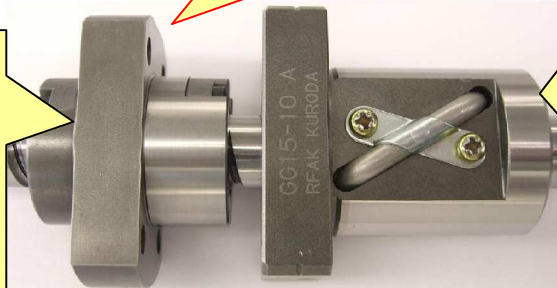
• The actual table speed value must be determined by taking into consideration of its critical speed value which depends on the screw shaft length.

Downsized Nut

Difference of nut size

Smallest size !!

F Series
End Deflector Type
 <Example>
Model Number :
FG1510PS-HPNR
Nut total length : 38mm
Nut outer dia : 30mm



G Series (Existing)
Tube Type
 <Example>
Model Number :
GG1510DS-BALR
Nut total length : 52mm
Nut outer dia : 34mm

Longer Life

Basic dynamic load rating related to the lifetime expectancy.

Shaft Dia	Item comparison	Lead							
		5mm		10mm		20mm		25mm	
		F series	Existing	F series	Existing	F series	Existing	F series	Existing
10mm	Basic dynamic load rating N			2600	2200				
12mm				6700	3850	4300	3850		
15mm		7400	6900	7400	6900	4800	4400		
20mm				18000	13500	11600	9200		
25mm		13100	12500	20400	16100			13100	10400

● The content of this brochure is subject to change without notice for product improvement purpose.