

aerospace
climate control
electromechanical
filtration
fluid & gas handling
hydraulics
pneumatics
process control
sealing & shielding



AC890PX

High Power Modular AC Drives
150 – 600 HP / 110 – 400 kW



ENGINEERING YOUR SUCCESS.



AC890PX

High Power Modular AC Drives

Building Block Drive

Patent Pending **PowerPak** modules plug into a common bus rail system to form a **COMPLETE DRIVE**.

Enclosure, disconnect, line reactor and fusing included.

Plug-in Modularity

- Sealed modules are easy to install and service
- Modules replace in minutes
- Easy-to-handle-under 50lbs.
- Replaceable by local technical staff
- Freight Friendly, easily shipped around the globe using major overnight carriers
- Packaged and designed to clear customs quickly

Integrated Bus System

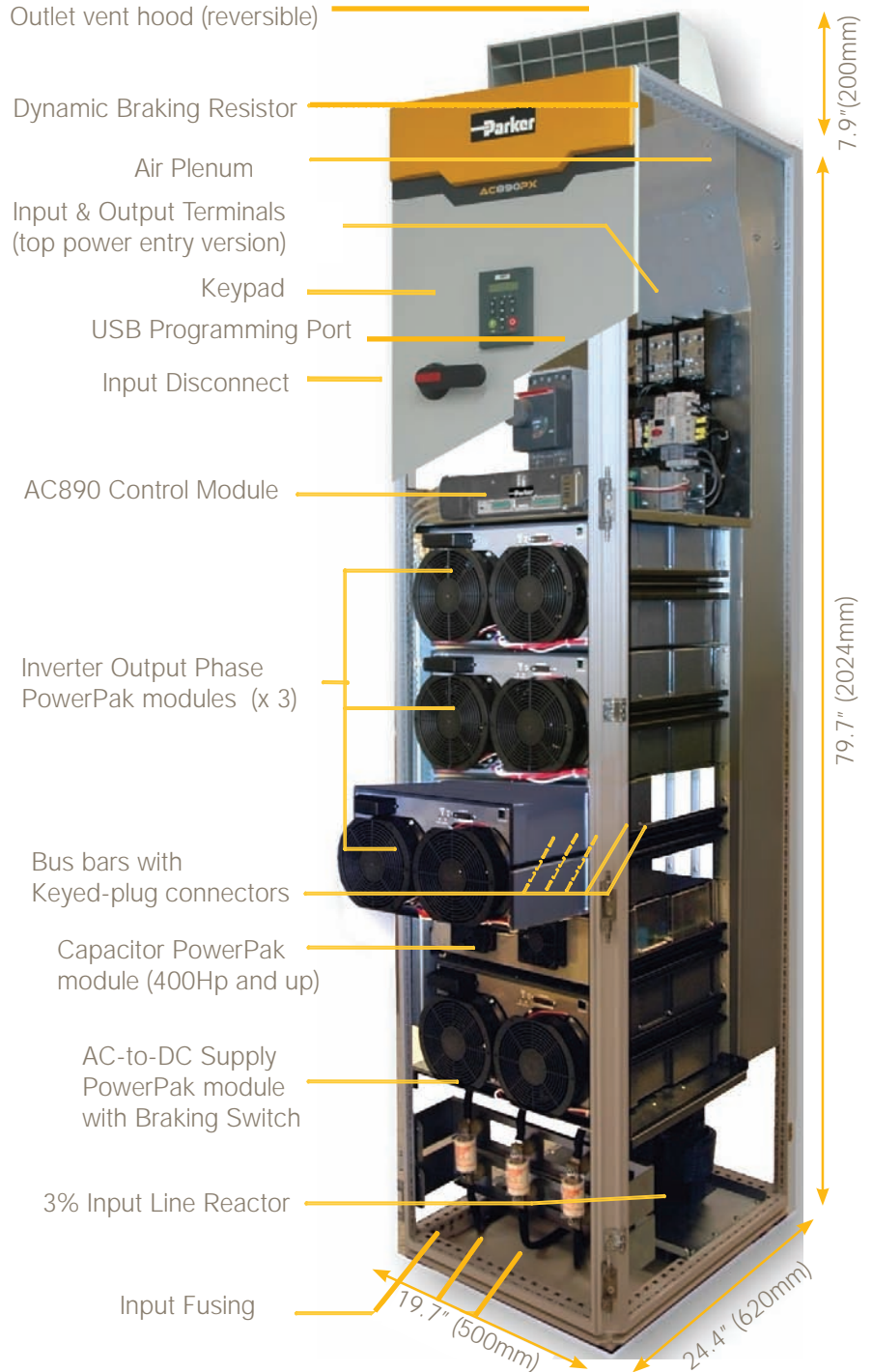
- Power wiring minimized
- Keyed modules eliminate errors

Compact Size

- Saves factory floor space
- Only 20" (500mm) wide – Best-in-Class!

Industrially Rugged

- Built-in Full Torque Braking
- 4-quadrant dynamic response
- Duty-cycle limited Braking resistor

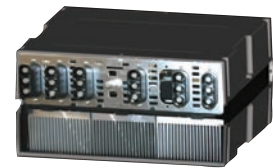


PowerPak Modules



PowerPak Phase Module – Front View

- Each bay location holds 1 PowerPak module
- Includes inverter phase assemblies, DC supplies and capacitor modules
- Bus bars run across the PowerPak module back, w/self aligning, silver-plated pluggable connectors
- Cooling fans draw air in the front & out a top plenum
- Integrally mounted in a 79.7"H x 24.4"D x 19.7"W (2024mmH x 620mmD x 500mmW) enclosure



PowerPak Phase Module - Rear View

AC890PX

High Power Modular AC Drives

A unique high power AC drive with modular architecture

Patent pending technology

Pluggable PowerPak Modules mean less down time

Line fuses, input line reactor, AC line disconnect included for easy installation

380, 415, 460, 575, and 690 volt inputs accommodated

Dynamic braking switch and resistor included

Safe Stop feature coming soon.

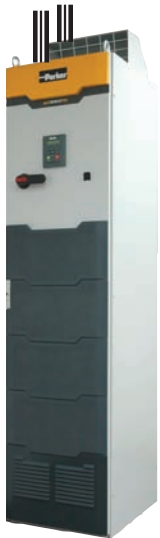


Can a new AC drive design increase your up-time while saving factory floor space and seamlessly integrating with your production line?

The AC890PX from Parker SSD Drives will change your perception of AC drives. The standard drive comes with everything needed to run your process, and once it's installed, will never need a trip back to the factory if service is required.

AC890PX Power Entry Types

TOP POWER ENTRY/EXIT



BOTTOM POWER ENTRY/EXIT



Four Operating Modes

- Volts/Hertz
- Sensorless vector
- Full flux vector
- Servo (PMAC)

Four Feedback Options

- Incremental encoder
- Sin/Cos encoder
- Endat absolute encoder
- Resolver



Runs induction, torque motors, or PMAC Servo

POWER INPUT AND OUTPUT

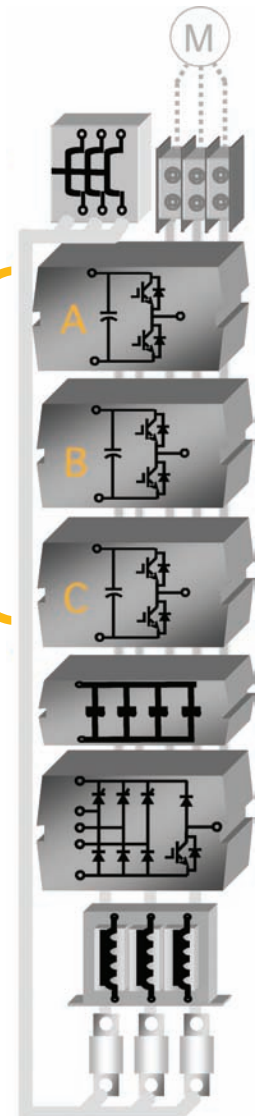
INVERTER PHASE MODULES

FILTER CAPS

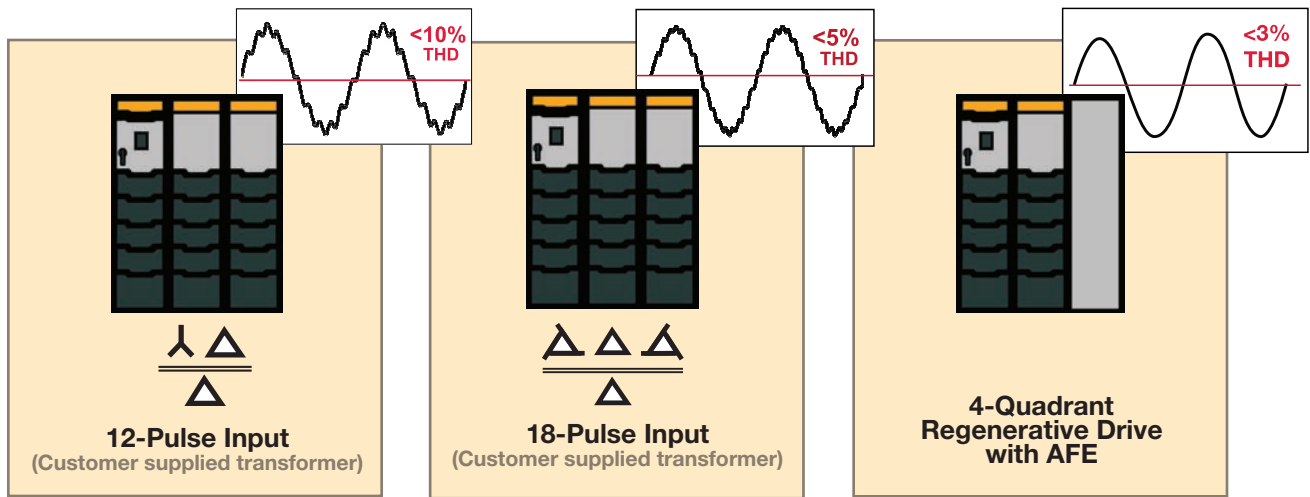
CONVERTER

LINE REACTOR

FUSES



Alternate Input Power Configurations



Line Regenerative Capabilities

For applications requiring 4-quadrant operation, the AC890PX Active Front End (AFE) can be specified.

- Fully line regenerative drive
- Continuous duty at full torque – motoring or braking
- Negligible power line harmonics – meets IEEE519
- Unity power factor
- Compact 3-bay (63"/1600mm) enclosure

The block diagram shows the power flow from the LCL Filter through the Active Bridge and Inverter to the Motor (M). A large yellow arrow labeled "POWER FLOW" indicates the direction of energy transfer.

Specifications

OPERATING SPECS	
Std Duty O/L Ratings:	110% for 60 seconds
Heavy Duty O/L Ratings:	150% for 60 seconds
Servo Torque Ratings:	Consult factory
Output Frequency	0 - 1000 Hz; V/Hz mode 0 - 350 Hz; closed loop vector mode 0 - 120 Hz; sensorless vector mode
Switching Frequency	2 kHz (standard default), adjustable to 4 KHz** de-rating may apply; consult factory. Audibly silent switching frequency pattern.
Dynamic Braking	Built-in DB switch and DB Resistor Standard, 100% Torque rated (limited duty) Option for external resistor
Ambient Temperature	0°C to 40°C (32°F to 104°F)
Product Enclosure	Rating IP21/NEMA 1 standard. IP52 and higher available as special order
Enclosure Rating	Enclosure provides 15dB attenuation to radiated emissions between 30-100MHz.
Humidity	Maximum 90% relative humidity at 40°C non-condensing
Atmosphere	Non ammable, non corrosive and dust free
Climatic Conditions	Class 3k3, as de ned by EN50178 (1998)
Vibration	Test Fc of EN60068-2-6

STANDARDS	
Pollution Degree	Pollution Degree II (non-conductive pollution, except for temporary condensation)
Europe	This product conforms with the Low Voltage Directive 73/23/EEC with amendment 93/68/EEC, Article 13 and Annex III using EN50178 (1998) to show compliance. Meets EN61800-3 (2nd environment)
North America/ Canada	Complies with the requirements of UL 508C

Options & Accessories



Increase the flexibility of the AC890PX by adding:

- 6911 enhanced keypad
- 500mm auxiliary enclosure for following options:
- Output reactor or dV/dt filters for long motor leads
- Additional dynamic resistor capacity
- External EMC filter for 1st environment
- Input or Output contactor

Applications



Paper and Pulp



Metals



Alternative Energy



Water Treatment

Specific Applications

- Fans and Pumps
- Compressors
- Extruders
- Web Rewind/Unwind
- Plating
- Engine dynamometers

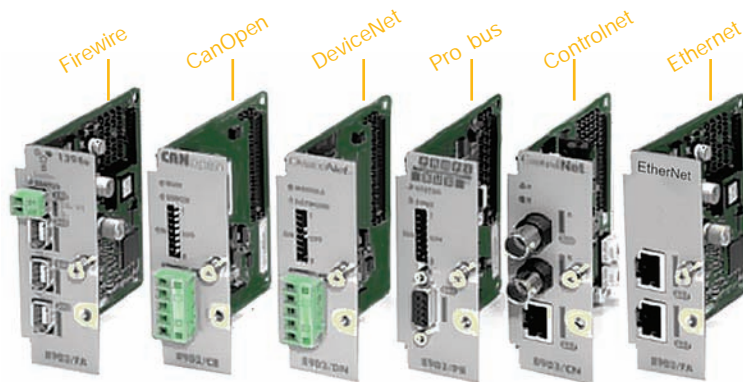
Communications

AC890PX controllers use a fast 150MHz DSP to manage communications to all major industrial Fieldbus networks. High performance communication ports are linked directly to the fast control loops of the drive. Minimum delay exists between a digital setpoint sent through fieldbus and the control loops.



Communication Ports

- **Firewire IEEE1394A and B** - Peer-to-peer
- **DeviceNet** - FieldBus
- **CanOpen** - FieldBus
- **Profibus** - FieldBus
- **ControlNet** - FieldBus
- **Firewire** - Peer-to-peer
- **Ethernet** - FieldBus



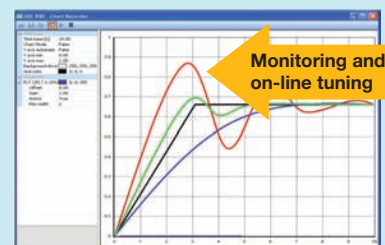
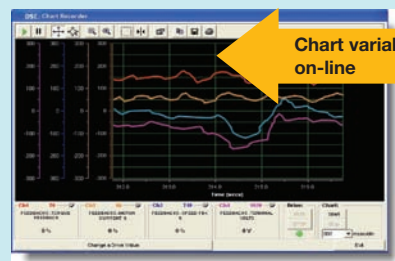
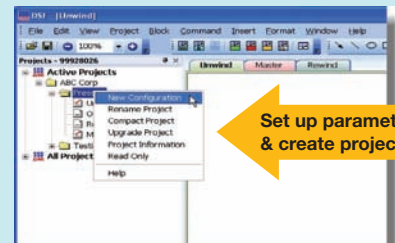
See page 7 for option part numbers.

DSE

Drive System Explorer Software Tool

DSE has been designed to assist you in the creation and management of your project. It offers user-defined macros and PLC-like function blocks for advanced applications.

- **32 bit architecture**
- **Multiple Configuration Interface**
- **Graphical Programmability**
- **Object Oriented Software**
- **Fully Deterministic**



DSE Lite is included free of charge

Model Number Key



1 Product Series
 890 Standard
 891 Conformal Coated PCB's

2 Product Type
 PX Modular Standalone Drive

3 Voltage Rating
 4 380-460 VAC
 6 500-575 VAC
 7 600-690 VAC

4 Current Rating
 if Voltage code is 4 Cont. Output
 RMS Amps@400VAC/150% OL
 0215 150 HP/110 kW
 0260 200 HP/132 kW
 0300 250 HP/160 kW
 0420 300 HP/200 kW
 0480 400 HP/250 kW
 0520 280 kW
 0580 500 HP/315 kW
 if Voltage code is 6 or 7
 Cont. Output RMS Amps@
 690VAC/150% OL
 0130 150 HP/110 kW
 0160 200 HP/132 kW
 0190 250 HP/160 kW
 0230 200 kW
 0280 300 HP/250 kW
 0320 280 kW
 0340 400 HP/315 kW

5 Dynamic Braking
 B Braking Control
 includes internal brake
 resistor (200kJ/2.4 kW)
 and thermal OL protection
 N No Brake Switch

6 Build Options
 00 Top Entry
 01 Bottom Entry
 02 Top Entry no reactor
 03 Bottom Entry no reactor

7 Performance Level
 A Advanced
 H High Performance

8 Destination
 FR France
 GR Germany
 IT Italy
 PL Poland
 PO Portugal
 SP Spain
 SW Sweden
 UK UK
 US US/Canada

Feedback Option Cards	
Encoder Quadrature Incremental	8902/EQ/00/FF
EnDat Encoder 2.1 (Sin/Cos type, V2.1)	8902/E1/00/FF
Resolver (Standard for Servo PM Motors)	8902/RE/00/FF
Tech Slot A Option Cards	
DeviceNet FieldBus	8903/DN/00/FF
Pro bus FieldBus	8903/PB/00/FF
ControlNet FieldBus	8903/CN/00/FF
CanOpen FieldBus	8903/CB/00/FF
Modbus (RS485)	8903/RS/00/FF
Ethernet FieldBus (Ethernet/IP)	8903/NE/00/FF
Ethernet FieldBus (Modbus/TCP)	8903/NM/01/FF
Reference Encoder	8903/EQ/00/FF
Mark Registration	8903/M1/00/FF
Tech Slot B Option Cards	
FireWire 1394A (peer to peer comms, 400Mbps)	8903/FA/00/FF
FireWire 1934B (peer to peer comms, 800Mbps)	8903/FB/00/FF

Drive Ratings

400V Model Numbers	Heavy Duty / CT Rating	Std Duty / VT Rating	HD/CT Amps 150%/60s	SD/VT Amps 110%/60s	Rated Amps No overload
890PX/4/0215/B/00/A	110 kW	132 kW	215	260	265
890PX/4/0260/B/00/A	132 kW	160 kW	260	340	347
890PX/4/0300/B/00/A	160 kW	200 kW	300	390	398
890PX/4/0420/B/00/A	200 kW	250 kW	420	480	487
890PX/4/0480/B/00/A	250 kW	315 kW	480	600	609
890PX/4/0520/B/00/A	280 kW	355 kW	520	660	670
890PX/4/0580/B/00/A	315 kW	400 kW	580	720	731
460V Model Numbers					
890PX/4/0215/B/00/A	150 HP	200 HP	200	250	255
890PX/4/0260/B/00/A	200 HP	250 HP	250	320	326
890PX/4/0300/B/00/A	250 HP	300 HP	300	380	388
890PX/4/0420/B/00/A	300 HP	400 HP	380	480	487
890PX/4/0480/B/00/A	400 HP	500 HP	460	590	599
890PX/4/0580/B/00/A	500 HP	600 HP	580	700	711
575V Model Numbers					
890PX/6/0130/B/00/A	150 HP	200 HP	160	210	214
890PX/6/0160/B/00/A	200 HP	250 HP	210	250	255
890PX/6/0190/B/00/A	250 HP	300 HP	260	310	316
890PX/6/0280/B/00/A	300 HP	400 HP	310	420	426
890PX/6/0340/B/00/A	400 HP	500 HP	410	480	487
690V Model Numbers					
890PX/7/0130/B/00/A	110 kW	132 kW	130	160	163
890PX/7/0160/B/00/A	132 kW	160 kW	160	190	194
890PX/7/0190/B/00/A	160 kW	200 kW	190	240	245
890PX/7/0230/B/00/A	200 kW	250 kW	230	280	286
890PX/7/0280/B/00/A	250 kW	315 kW	280	340	347
890PX/7/0320/B/00/A	280 kW	355 kW	320	390	398
890PX/7/0340/B/00/A	315 kW	400 kW	340	430	436

Sales Offices

Australia

Parker Hannifin
(Australia) Pty Ltd
9 Carrington Road
Private Bag 4, Castle Hill
NSW 1765
Tel: +61 2 9634 7777
Fax: +61 2 9899 6184

Belgium

Parker Hannifin SA NV
Parc Industriel Sud Zone 11
23, Rue du Bosquet
Nivelles B -1400
Tel: +32 67 280 900
Fax: +32 67 280 999

Brazil

Parker Hannifin Ind. e Com. Ltda.
Av. Lucas Nogueira Garcez, 2181
Esperança - Caixa Postal 148
Tel: +55 0800 7275374
Fax: +55 12 3954 5262

Canada

Parker Motion and Control
160 Chisolm Drive
Milton
Ontario L9T 3G9
Tel: +1(905)693 3000
Fax: +1(905)876 1958

China

Parker Hannifin Motion &
Control
(Shanghai) Co. Ltd.
SSD Drives
Suite B2109 21st Floor
Hanwei Plaza
7 Guanghua Road
Chaoyang District
Beijing 100004
Tel: +86(10)6561 0520/1/2/3/4/5
Fax: +86(10)6561 1070

France

Parker SSD Parvex
8 Avenue du Lac
B.P. 249
F-21007 Dijon Cedex
Tel: +33 (0)3 80 42 41 40
Fax: +33 (0)3 80 42 41 23

Germany

Parker Hannifin GmbH
Von-Humboldt-Strasse 10
64646 Heppenheim
Tel: +49(0)6252 798200
Fax: +49(0)6252 798205

India

SSD Drives India Pvt Ltd
151 Developed Plots Estate
Perungudi,
Chennai, 600 096
Tel: +91 44 43910700
Fax: +91 44 43910700

Italy

Parker Hannifin SPA
Via Gounod 1
20092 Cinisello Balsamo (MI)
Milano
Tel: +39 02 66012459
Fax: +39 02 66012808

Singapore

Parker Hannifin Singapore Pte Ltd
11, Fourth Chin Bee Rd
Singapore 619702
Tel: +65 6887 6300
Fax: +65 6265 5125

Spain

Parker Hannifin (España) S.A.
Parque Industrial Las Monjas
Calle de las Estaciones 8
28850 Torrejonde Ardoz
Madrid
Tel: +34 91 6757300
Fax: +34 91 6757711

Sweden

Parker Hannifin AB
Montörgatan 7
SE-302 60 Halmstad
Tel: +46(35)177300
Fax: +46(35)108407

UK

Parker Hannifin Ltd.
Tachbrook Park Drive
Tachbrook Park
Warwick
CV34 6TU
Tel: +44(0)1926 317970
Fax: +44(0)1926 317980

USA

Parker Hannifin Corp.
SSD Drives Division
9225 Forsyth Park Drive
Charlotte
North Carolina 28273-3884
Tel: +1(704)588 3246
Fax: +1(704)588 3249

